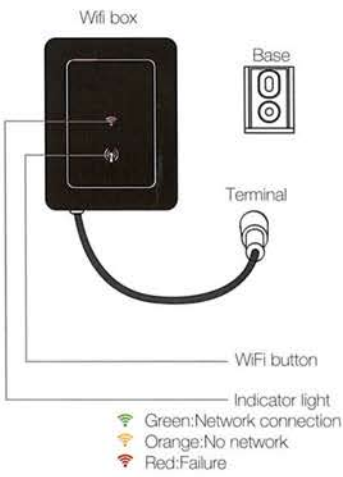
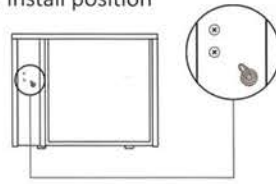




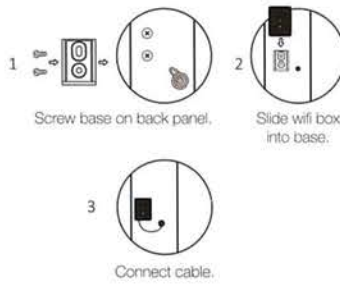
a. Components



b. Install position



c. Installation



1. APP Download



Android mobile please download from



iphone please download from

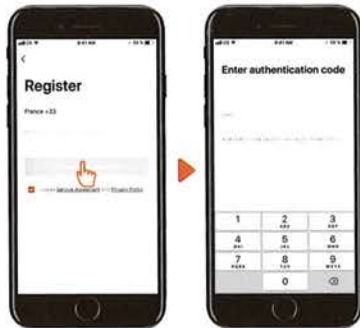


2. Account registration

1. Registration by Cell phone number/Email



2. Cell phone number registration



3. Creat family

Please set family name and choose the room of device



4. APP Binding

Please make sure your cell phone has connected the Wifi

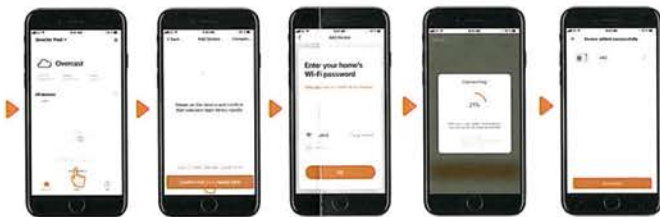
- Press Wifi button for 5 seconds to enter binding program, indicator light will flash in red.
- Please wait another 2 seconds for next step.
- Click "Add device", follow indication to finish binding.



If connect fails, please make sure your network name and password is correct. And your router, mobile phone and device are as close as possible.

4. Notice, after binding, if you repress WIFI button for 5 seconds, the device will clear your original binding.

Remarks: Please make sure the router is configured at 2.4G.



5. Operation

1. For heat pump with Heating function only :

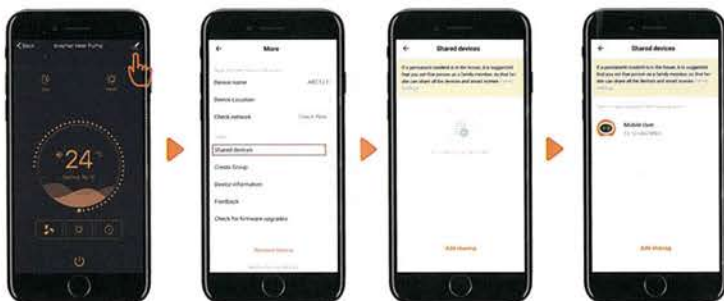


2. For heat pump with Heating&Cooling function :



6. Share devices to your family members

After binding, if your family members also want to control the device. Please let your family members register the APP first, and then the administrator can operate as below:



Then your family members can log in as below:



Notice:

- If wifi signal can not cover machine, please connect 10 m extend cable (optional, not standard configuration).
- The weather forecast is just for reference.

APP is subject to updating without notice.